



SIMSREALITY

COMPANY PROFILE

SIMSREALITY

S I M U L A T I O N & R E A L I T Y

Connect space and experience with
new dimensions of technology



SIMSREALITY

MAKE YOU REALITY BASED METAVERSE SPACE



Contents

- Message from the CEO
- COMPANY INTRODUCTION
- VISION * MISSION
- OUR SERVICE
- CERTIFICATE



SIMSREALITY is a compound word of Simulation and Reality, which means to make virtual and reality into one world.

SIMSREALITY is a metaverse software development company located in Daedeok Special District (INNOPOLIS), Daejeon Metropolitan City.

"We are developing technologies to bring reality and virtuality into one world, with the vision of "Connecting space and experience with new dimensions of technology", and will do our best to serve the world's best Metaverse World.

“

We will give a
new impression
through **humanity**,
technology,
and **experience**.

”

...

MESSAGE FROM THE **CEO**

“Our value and goal is to provide completely new services
so that our daily lives can move toward a better future through
future technology that we have never experienced.”

“SIMSREALITY will fully connect the joy of reality to tthe virtual world and
provide an experience that can satisfy customers through corporate value.”

Corporate Name	SIMSREALITY Co., Ltd.		
CEO	Kim Myeonghwan	Date of establishment	January 1, 2018
Location	Room 715, C-dong 17, Techno 4-ro, Yuseong-gu, Daejeon (Research Center) Room 617, C-dong 17, Techno 4-ro, Yuseong-gu, Daejeon (Business Department) TEL +82-042-934-1801 / FAX +82-042-934-1802		

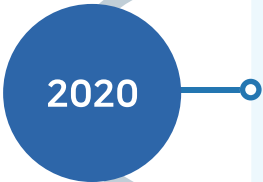
COMPANY INTRODUCTION ...



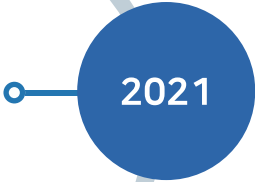
- 01 Establishment of SIMSREALITY Co., Ltd.
- 01 Declaration of Software business operator
- 01 8th Youth Entrepreneurship Academy
- 04 Certification of venture companies
- 04 Certification of excellent technology companies
- 07 Establishment of SIMSREALITY R&D Center



- Selection of Industry-Academic Cooperation Companies of Woosong University 01
- Selection of KOEN Start-Up Supporters Support Project 11

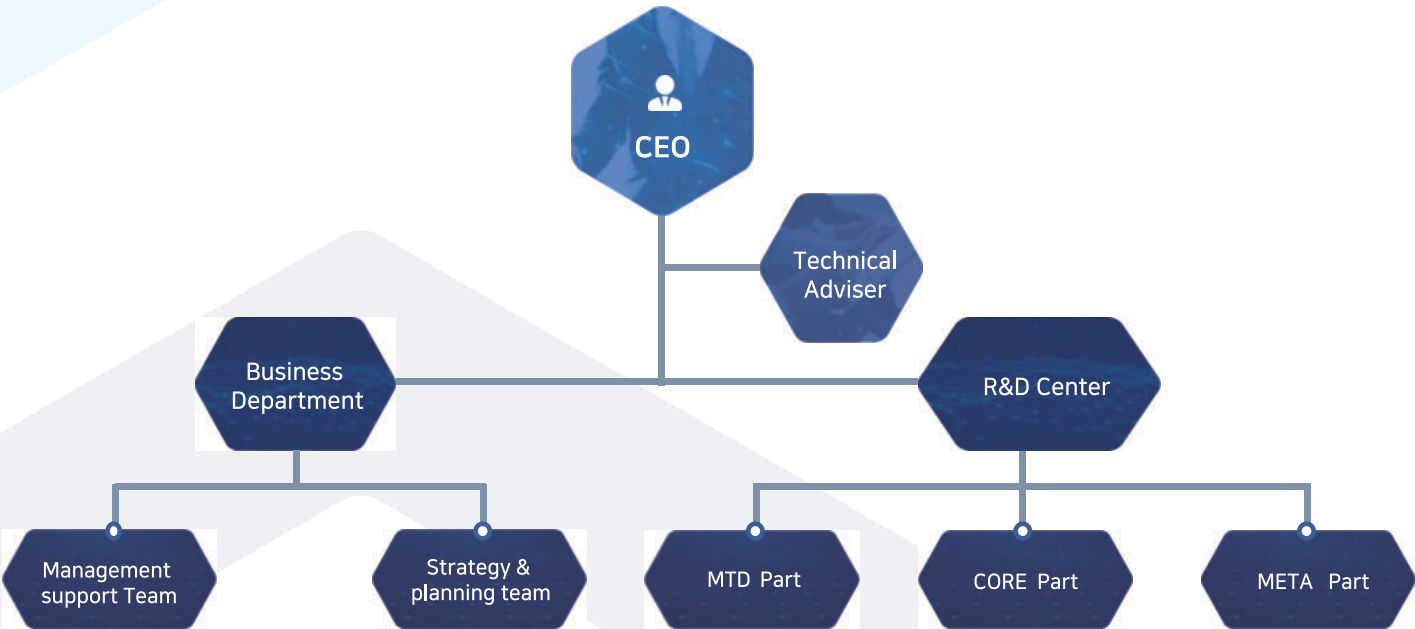


- 03 Selection of 2020 S/W High Growth Club Preliminary High Growth Companies (1st Year)
- 11 Certification of ISO9001:2015
- 11 Selection of 2020 Contech Meet-up Day Outstanding Enterprise



- Selection of 2021 S/W High Growth Club Preliminary High Growth Companies (2nd Year) 03
- Certification of Inno-Biz 06
- Joining Metaverse Alliance (Korea Metaverse Industry Association) 07
- 2021 Hyundai Heavy Industries Group's DT Open Innovation Excellence Award 09
- Selection of First Penguin Company 10
- Selection of 2021 Smart Manufacturing Innovation Start-up 12

“Establishing a technology, research-oriented talent organization”



MISSION

"The world's leading metaverse company that brings reality and virtuality into one world and pursues the value for customer satisfaction with new experiences "



PRODUCT

"Reality is the Same as Virtual"
Service Platform



VALUE

New Experiences/
New Economies



CUSTOMER

Voice of Customer
Pursuing Customers'
Satisfaction

VISSION

A global number one service platform that leads new technologies in the future and shares them with a variety of people



TECHNOLOGY

SIMSREALITY's Own
Technology for the Future



ORGANIZATION

Organizational Culture
Shared and Enjoyed
by Everyone



OBJECTIVE

Glover No.1
Service Platform

Service Introduction

VATTAIN
[Metaverse-based Education and Training Service Platform]
World Map

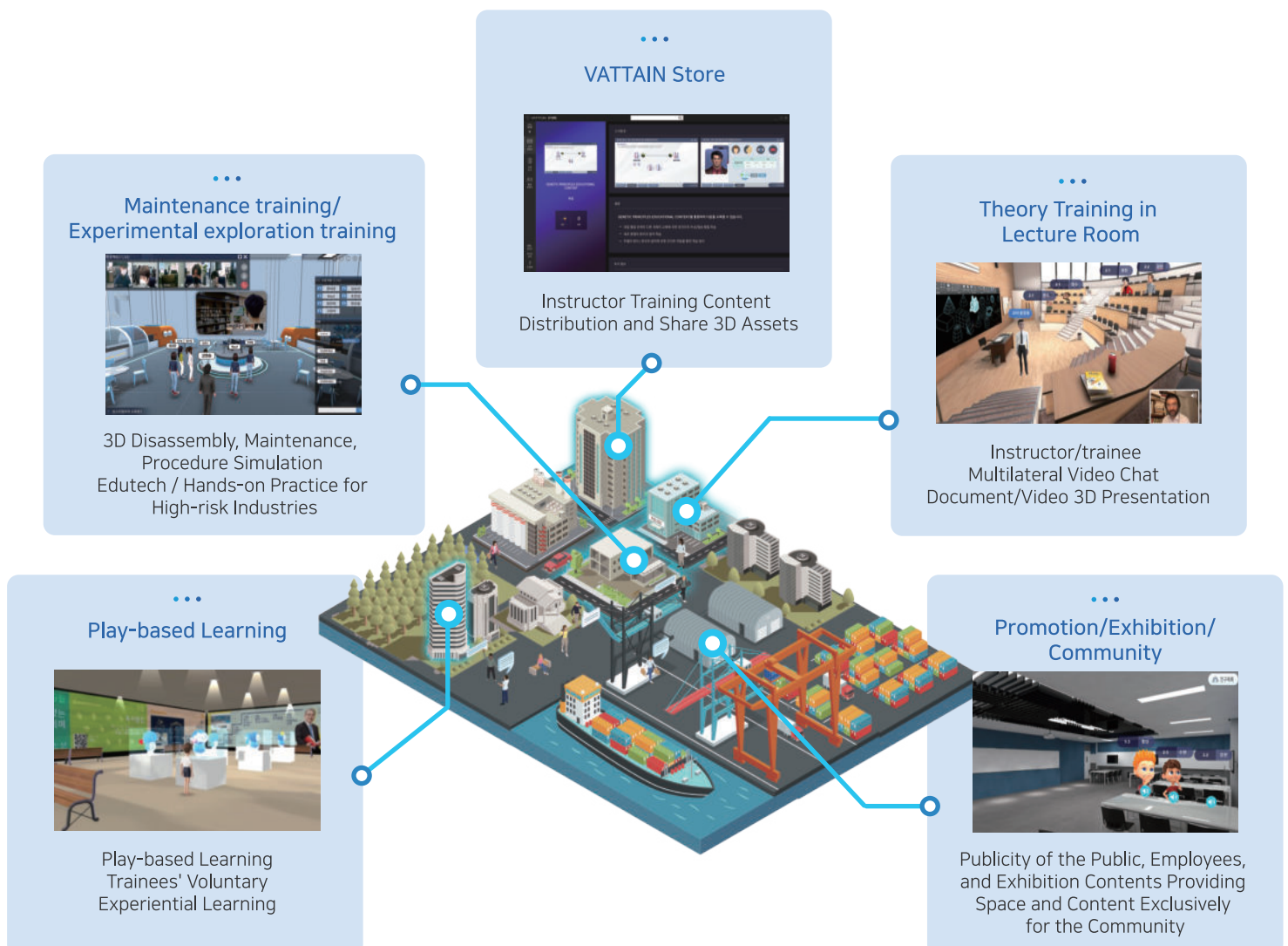
Metaverse-based Education and Training Service Platform

- A Metabus Educational Space Production System Focused on Educational Sites
- 2D and 3D presentation, communication system for theoretical training
- 3D hands-on model simulation content for hands-on training
- Avatar Play Content for Trainees' Voluntary and Immersion Learning
- A content store for the continuation and operation of the education curriculum

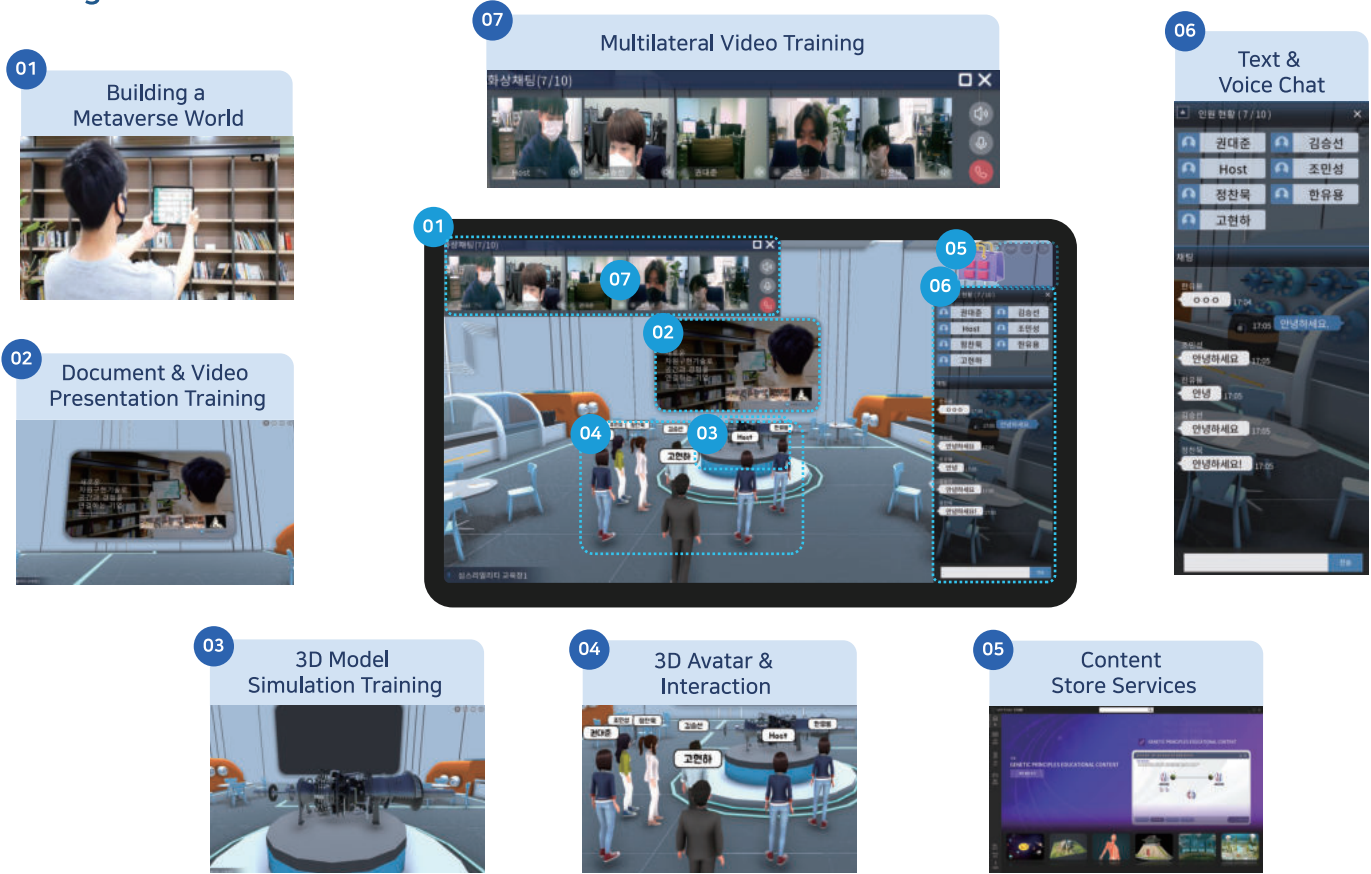


VATTAIN provides metaverse space creation and avatar-based education and training services for edutech and high-risk industries.

- Trainees play as avatars in the metaverse virtual space of each industry and can enjoy training and learning theoretical and practical education contents.
- Instructors can manage training scenarios, contents, and user information, and continue and operate the education curriculum using the store.



It is a major function of VATTAIN that provides avatar-based education services, and learning content stores from the creation of metaverse spaces at education and training sites.



VATTAIN FUNCTIONAL SUMMARY TABLE

Category	Function	Description
01	Build Metaverse World	Mobile · 360-degree rail camera-based spatial scanning, modeling and mapping
	3D model (design file or build) based spatial modeling and mapping	Establishing a metaverse space identical to reality - Connected with ENVUE
02	3D Avatars & Interactions	Selection of the appearance (gender, fashion) of the avatar, manipulation of actions, and preview
	Avatar's 8-way spatial movement and motion interaction	Establishing a metaverse space similar to reality or expanded to a cartoon type
03	Text & Voice Chat	Individual and group chat and voice communication
	Configuration of camera, speaker and microphone	Provide realistic avatar service in metaverse space
04	Multilateral video training	RTC based 1:1 / 1:N / N:N video communication
	Document & Video Presentation Training	Provide avatar's free metaverse space exploration and interaction
05	3D model simulation training	3D model disassembly/assembly/procedural simulation
	Switch first-person 2D or third-person 3D screen viewer	Provides RTC-based multi-party text and voice chat function
06	Content Store Services	Search for educational content, check information, and download
	Playing content search, information check, download	Provides communication setting function for PC and mobile devices
07	3D Avatar & Interaction	3D model disassembly/assembly/procedural simulation
	Switch first-person 2D or third-person 3D screen viewer	Provide educational material screen sharing function on bulletin board in metaverse space
08	Content Store Services	Search for educational content, check information, and download
	Playing content search, information check, download	Provide educational material learning function in metaverse space or full screen
09	3D model simulation training	3D model disassembly/assembly/procedural simulation
	Switch first-person 2D or third-person 3D screen viewer	Provides simulation function of 3D content in metaverse space
10	Content Store Services	Search for educational content, check information, and download
	Playing content search, information check, download	Provides simulation learning function in metaverse space or full screen
11	3D Avatar & Interaction	3D model disassembly/assembly/procedural simulation
	Switch first-person 2D or third-person 3D screen viewer	Provides simulation learning function in metaverse space or full screen
12	Content Store Services	Search for educational content, check information, and download
	Playing content search, information check, download	Provide instructor training content and 3D object sharing function
13	3D model simulation training	3D model disassembly/assembly/procedural simulation
	Switch first-person 2D or third-person 3D screen viewer	Sharing game element contents and avatar items for experiences and activities

： Hardware Specifications [Client - Server]

VATTAIN Hardware [Client - Server] Specifications

Category		Minimum Specifications	Recommended Specifications
Client PC	OS	Windows 10	Windows 10
	CPU	Intel Core i3-5000 Processor or more	Intel Core i5-9600K Processor or more
	RAM	8GB or more	16GB or more
	VGA	NVIDIA GeForce GTX 1060 or more	NVIDIA GeForce RTX 2060 or more
Client Mobile	OS	Android 8,0 oreo or more	Android 12,0 Snow cone or more
	CPU	Octa-core,1.7GHz or more	ARM Cortex-A55 2.21 GHz or more
	RAM	4GB or more	8GB or more
	GPU	Mali-G72 or Adreno 630 or more	ARM Mali-G78 or more
Server (RTC, Application)	OS	Windows Server 2022	Windows Server 2022
	CPU	Intel Xeon G6226R 16Core	Intel Xeon G6226R 16Core * 2 (32Core)
	RAM	16GB or more	32GB or more
	HDD	HDD 1TB / SSD 500GB	HDD 2TB / SSD 1TB

： Software Feature Specification

VATTAIN SOFTWARE FUNCTIONAL SPECIFICATIONS

Category		Contents	Specifications (1SET or maximum standard)
Space and Objects	Create and Provide Space	Based on On-site Scanning or Modeling Target Space Size (Unit: square meter)	30 square meters(provided), additional expansion
	3D object	Number of objects to be placed and interacted with in 3D space	50 objects (1SET)
Avatar	Avatar's Appearance and Emotions	Gender (male, female) fashion (hair, clothes, shoes), emotion (expression and action)	Each of 5 gender, fashion, and emotion expression (1SET)
	Avatar's Motion	Avatar's movement, user key and UI matching	1 avatar (1SET)
	Number of Room Generation	Create 1 room (instance)	10 rooms (1SET)
Concurrent users	Number of 1:N Concurrent Users	Number of 1:N Concurrent Users per Room	1,000 People (maximum)
	Number of N:N Concurrent Users	Number of N:N Concurrent Users per Room	50 People (maximum)
Human Communication	Multilateral Communication	Text / Voice / Video Chat	1 Each (maximum)
	Multi-party Screen Sharing	Screen Sharing 3D Bulletin Board	1 Bulletin Board (1SET)
	1:1 Communication	1:1 Video Chat, Screen Sharing, Chat	1 Each (maximum)
Education System	Educational Scenarios and Content	Object Manipulation and Effect Demonstration, Training Scenario Creation and Demonstration	20 Object Scenarios Each (1SET)
	Editing Tool for Education System	Editing Tool Software of Educational Scenarios	1 Type (maximum)

: VATTAIN Pricing [customizing]

VATTAIN Pricing [customizing]

Category	Contents		Price
Platform construction and operation	Platform-specific (OS) Clients	PC (Windows 10), Mobile (Androids, iOS), HMD (VR)	Contact Us Separately
	Building a Platform	Cloud Server, 4 Male and Female Avatars, Text Chat	
	Video Chat and Share	Voice and Video Chat, Screen Sharing 3D Bulletin Board, 1 :1 Video/Screen Function	
	Simultaneous Access and Traffic	1 Room (instance) Basis, Concurrent Connectors and Room Creation, 300GB of Traffic	
	Member-only Management	Account Management Web page, Admin Functions, Statistics	
	Platform Operation (if cloud is deployed)	Maintenance of Cloud Server Traffic and Data, Services and Content	
Content Creation	Creation of Backgrounds and 3D Content Objects	Number of 3D Objects, Space(square meter)	Contact Us Separately
	Creation of Avatars and Motions	The Number of Facial Expressions and Actions of the Avatar, and the Level of Movement and Manipulation of the Avatar	
	Education System and Editing Tools	Object Manipulation and Effect Demonstration, Educational Scenario Creation and Demonstration, Scenario Editing Program	

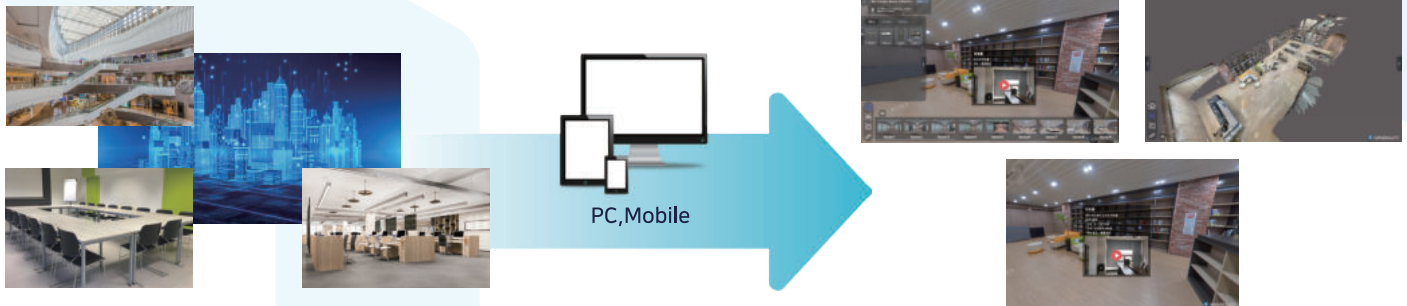


Promotional Video of VATTAIN

ENVUE (Metaverse Based Spatial Information Service)

Service Introduction

- 'Virtual Tour' Service that Enables 3D Space Exploration with PC/Mobile Application
- Providing Customized Spatial Information Service Using Various Editing Functions
- Utilized as a Source Technology Capable of Constructing Various Due Diligence-based Spaces in the Metaverse

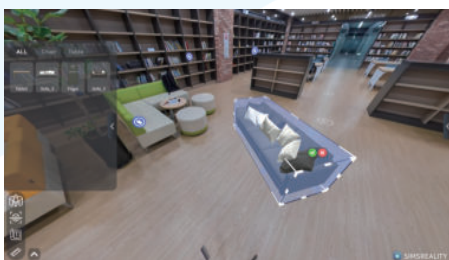


ENVUE FEATURES

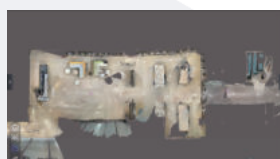
- It is Possible to Build a Three-dimensional Space Relatively Quickly and at a Low Cost because it is Easy to Shoot Using a General Device such as a Mobile Phone Camera or a 360-degree Camera.
- Service can be Expanded to Various Fields (Education, Industry, Shopping, etc.) Based on Space Construction and Editing Functions

Service Function

- 01 Display Detailed Information of the Currently Located Space
- 02 Place Selected Furniture within the Space, and Reposition and Rotate



- 03 View Setting Function
 - Check Space in Various Ways
 - Measure the Distance between Selected Points in Space

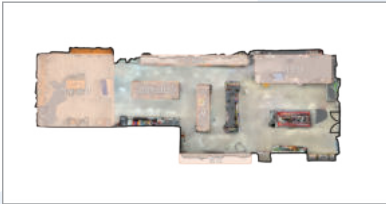


- 04 Sector List
 - Can Move to Each Sector Set in the Current Space

- 05 Tag function
 - Text, Video, Image, Link, etc.



Service Function



- 06 Directions
- Show Route to Selected Point in Top View
 - Highlight that Route from the User's Point of View

- 07 Mini Map
- Highlight that Current Location in 3D or Top View

Service Procedure



Production Request

1. Request a Service Production
- Proposal of Optimal Service through Customized Consultation such as Customer Information, Target, and Period

Space Shooting Content Production

2. From Shooting to Planning and Production
- Planning and Production of Various Contents from Space Shooting by Our Own Specialists

Service Open

3. Service Open
- Open and Operate Services in the Form of PC and Mobile Applications

Service Specifications and Pricing Policy

Operating Specifications

PC : CPU intel 77th generation or higher, RAM 16GB or more, GPU GTX1060 or more, 5 GB or more of free space
Mobile : Galaxy Note 8+, Oreo version or higher (Android)

Pricing

Item	Scale (standard)	Amount (KRW)	Remarks
Space Shooting	100 square meters	Seperate Inquiry	
Tag/Label/video editing	100 ea	Seperate Inquiry	
Cloud Server	1year	Seperate Inquiry	1 year warranty
3D content	20 ea	Seperate Inquiry	

Application example (APT 84 type)



Area 84m²
30 info tags including options, area, etc.
5 3D contents such as furniture and home appliances

Total about 000 won



Promotional Video of ENVUE

CERTIFICATE ...

Current status of corporate certification



R&D Center



Venture Company



Inno-Biz



Software Business Operator



ISO 9001:2015

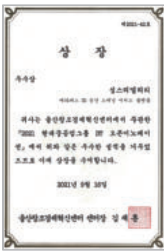
Award status



2019 KOEN Start-up and Start-up Supporters Support Project



2020 Contech Meet-up Day Excellence Award



2021 Hyundai Heavy Industries Group DT Open Innovation Excellence Award

Patent registration and application



High efficient 2D-3D switchable display apparatus



Space Touch Control System based on a Depth Sensor



Simulation System with High Degree of Freedom and Simulation Method Using the Same



System for Creating Simulation data and Method Using the Same



Design Registration Certificate - VATTAIN



Trademark Registration - VATTAIN



Indoor Mixed Reality Matching System



Creating Method for a three-dimensional map



Estimating Method for location in a three-dimensional space



Recognizing Method of objects in a three-dimensional space



Image Processing Method for Three-dimensional Avatar Movement in 3D modeling Space



Movement Method Using Avatar in a 3D Modeling Space



SIMSREALITY

MAKE YOUR REALITY BASED METAVERSE SPACE



SIMSREALITY

MAKE YOU REALITY BASED METAVERSE SPACE



WWW.SIMSREALITY.COM

T. +82- 042-934-1801 F.+82-042-934-1802 E.oops@simsreality.com
Room 715, C-dong 17, Techno 4-ro, Yuseong-gu, Daejeon (Research Center)